

Magnetic Separators and Pulleys

Douglas® magnetic separators are for use in helping to separate tramp ferrous metals from conveyed material. Most commonly they are suspended above and across the belt pulling metal up and away from the product flow. Magnetic pulleys are manufactured to CEMA standards and can be used in most any head pulley application.

PMG – CEMA Class Permanent Magnetic Head Pulleys

- Meets or exceeds CEMA/ANSI specifications
- Exclusive One Piece Rolled in Crown ensures consistent, proper belt tracking and tighter tolerances
- Remove potentially harmful tramp ferrous metal before it damages expensive processing equipment
- Crown face pulleys are furnished standard, flat face must be specified
- Douglas hubs and bushings are interchangeable with QD® or XT® style
- Stainless Steel Rim standard on all permanent magnetic pulleys

CBM – Standard Self Cleaning Permanent Magnetic Separator

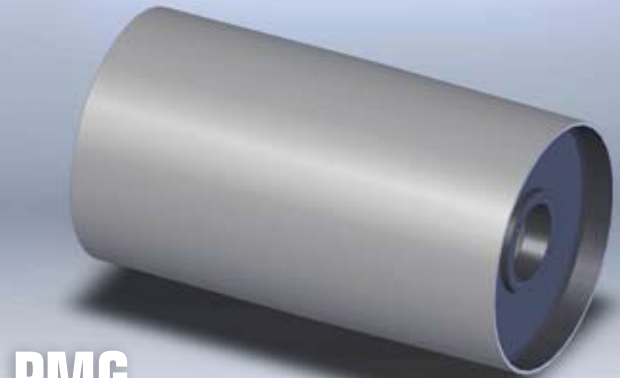
- Automatically discharges tramp metal away from the conveyor
- Heavy grade structural steel frame complete with CEMA class lagged crown face head pulley, tail pulley and Slide Tube® belt take-ups
- Heavy duty rubber cover belt standard with hot vulcanized cleats
- Shipped complete, factory test run and ready for installation
- CLASS II shaft mount gear drive with TEFC motor
- Also available in Super Duty (CBX) configuration with up to 30% more power

HMG – Standard Manual Cleaning Permanent Magnetic Separators

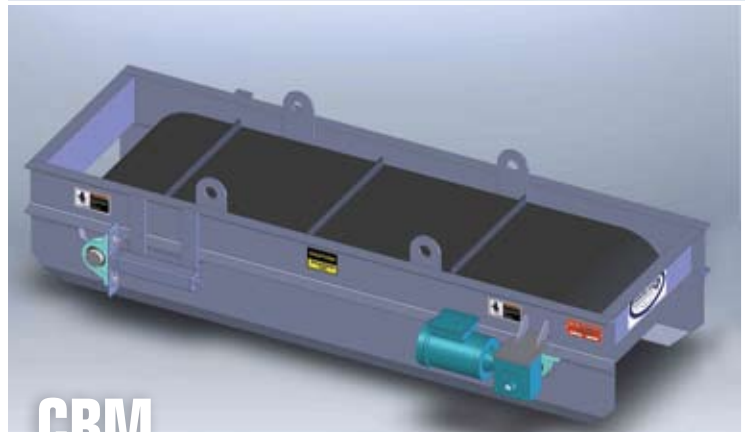
- Performance similar to Cross Belt Magnet except manual cleaning of ferrous metal required
- Pivot arm available for easy cleaning
- Shipped complete and ready for installation
- Also available in Super Duty (XMG) configuration with up to 30% more power



DOUGLAS *manufacturing* **D**



PMG



CBM



HMG

INDUSTRIES SERVED INCLUDE:



Also Available from Douglas:
PULLEYS
LAGGING
IDLERS
TAKE-UPS
IMPACT BEDS



Conveyor Equipment
Manufacturer's
Association

